



TIIG
INJURY SURVEILLANCE IN THE NORTH WEST OF ENGLAND

MACCLESFIELD DISTRICT GENERAL HOSPITAL EMERGENCY DEPARTMENT

MONTHLY BULLETIN: OCTOBER 2013 TO SEPTEMBER 2014

This bulletin provides a breakdown of all injury attendances to Macclesfield District General Hospital Emergency Department (ED) between October 2013 and September 2014.

During this twelve month period there were 23,891 injury attendances to the ED. The months with the highest number of attendances, calculated as a daily average, were July and September 2014 (77 per day) compared to January 2014, the month with the fewest (54 per day; **Figure 1**).

There were slightly more males (52%) than females presenting at Macclesfield District General Hospital ED (**Figure 1**). **Figure 2** presents the age group of injury attendances. Injury attendances were highest for those aged between 30 and 59 years (31%) followed by those aged 60 plus (24%) and 5 and 17 years (21%).

Table 1 details the injury group of attendances. The majority (86%) of injury attendances were classified as other injury and 7% were recorded as sports injury. Road traffic collisions (RTCs) and deliberate self-harm (DSH) each accounted for 3% of attendances.

Table 2 illustrates the source of referral for patients presenting with injuries. The majority (82%) of injury attendees self-referred.

Table 3 presents injury attendances by incident location. Almost three in five (57%) were recorded as 'other' location, while one in five (20%) occurred in a public place and 15% occurred in the home.

Table 4 shows the discharge destination of injury attendances. Thirty-seven per cent of attendees were discharged with no follow-up treatment required and just under one-quarter (24%) were discharged with follow-up treatment to be provided by a General Practitioner (GP).

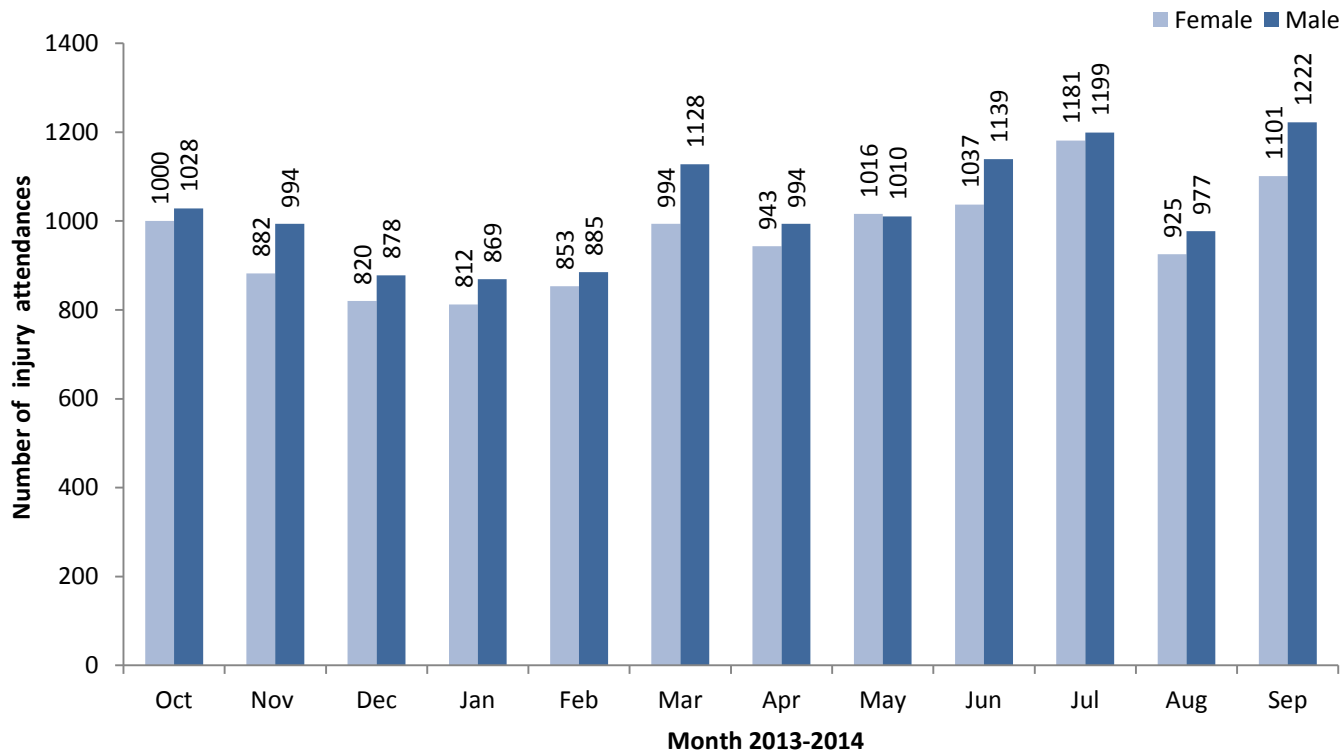
Assault attendances

Between October 2013 and September 2014 there were 388 assault-related injury attendances to Macclesfield District General Hospital ED.

Attendees were mainly male (63%) and two-fifths (40%) were aged between 18 and 29 years, followed by 38% aged between 30 and 59 years.

Table 5 shows that three in ten (30%) assaults occurred in a public place while 5% occurred at work.

Figure 1: ED injury attendances by gender and month, October 2013 to September 2014[^]



[^] There were <5 records where the gender was unknown; these have been omitted from the chart.

Figure 2: ED injury attendances by age group and month, October 2013 to September 2014

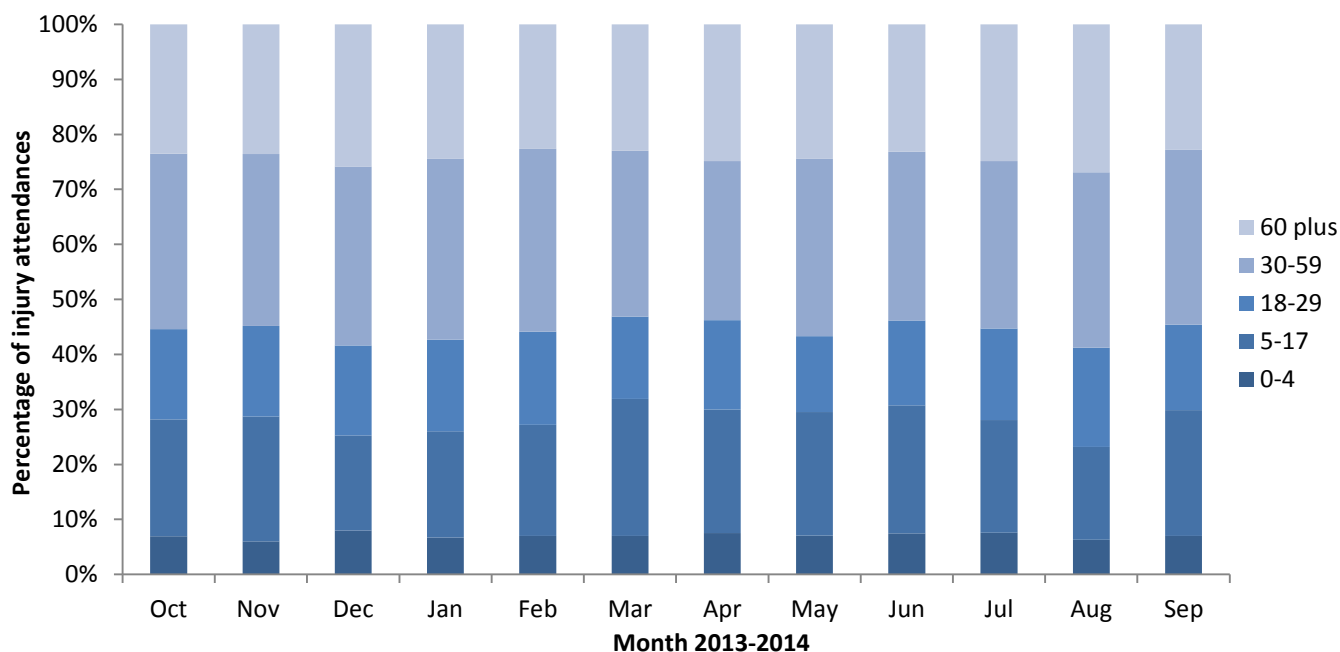


Table 1: ED injury attendances by injury group and month, October 2013 to September 2014[§]

Injury group	Oct	Nov	Dec	Jan	Feb	Mar	Apr	May	Jun	Jul	Aug	Sep	Total	%
Other injury	1739	1621	1473	1440	1469	1778	1673	1751	1881	2091	1678	1981	20575	86%
Sports injury	134	117	91	102	127	181	135	136	147	147	110	195	1622	7%
RTC	56	47	50	57	66	70	45	54	53	38	49	59	644	3%
DSH	51	60	40	48	45	54	58	54	51	63	36	56	616	3%
Assault	48	31	44	35	31	39	26	31	45	42	29	33	434	2%
Total	2028	1876	1698	1682	1738	2122	1937	2026	2177	2381	1902	2324	23891	100%

[§] Due to low numbers, firework injuries has been included in the 'other' injury category (n<=5).

Table 2: ED injury attendances by source of referral and month, October 2013 to September 2014^{1,2}

Source of referral	Oct	Nov	Dec	Jan	Feb	Mar	Apr	May	Jun	Jul	Aug	Sep	Total	%
Self-referral	1534	1505	1363	1365	1458	1729	1597	1652	1801	2001	1554	1941	19500	82%
Other	249	150	138	116	111	143	111	157	132	150	169	160	1786	7%
Health care provider	165	139	110	125	96	135	150	126	123	128	119	152	1568	7%
General medical practitioner	45	45	43	49	37	61	47	55	75	58	45	41	601	3%
Educational establishment	9	13	21	9	13	32	10	14	27	13	0	8	169	1%
Police	13	<20	12	11	<20	13	14	12	14	22	9	13	167	1%
Work	13	8	11	7	***	9	8	10	***	<10	6	<10	96	0%
Unknown	0	0	0	0	0	0	0	0	***	***	0	***	***	0%
Local authority social services	0	***	0	0	0	0	0	0	0	0	0	0	***	0%
Total	2028	1876	1698	1682	1738	2122	1937	2026	2177	2381	1902	2324	23891	100%

Table 3: ED injury attendances by incident location and month, October 2013 to September 2014^{1,2}

Incident Location	Oct	Nov	Dec	Jan	Feb	Mar	Apr	May	Jun	Jul	Aug	Sep	Total	%
Other	1106	980	904	858	961	1113	1111	1266	1239	1423	1228	1434	13623	57%
Public Place	447	377	375	348	352	446	371	364	464	447	345	442	4778	20%
Home	295	314	282	324	271	328	307	256	298	353	245	232	3505	15%
Work	104	103	75	77	91	101	92	79	<85	96	<85	110	1090	5%
Educational Establishment	76	102	62	75	63	134	56	61	95	<65	***	<110	<895	4%
Unknown	0	0	0	0	0	0	0	0	***	***	0	***	***	0%
Total	2028	1876	1698	1682	1738	2122	1937	2026	2177	2381	1902	2324	23891	100%

Table 4: ED injury attendances by discharge destination and month, October 2013 to September 2014^{1,2}

Discharge destination	Oct	Nov	Dec	Jan	Feb	Mar	Apr	May	Jun	Jul	Aug	Sep	Total	%
Discharged – did not require any follow-up treatment	732	657	541	554	655	800	758	797	787	856	737	871	8745	37%
General practitioner	457	482	430	442	378	503	432	441	518	576	420	541	5620	24%
Referred to fracture clinic	245	236	232	214	275	344	300	312	377	427	316	407	3685	15%
Patient of the same health care provider	187	172	203	143	167	185	169	179	195	168	168	176	2112	9%
Referred to A&E clinic	208	155	118	160	86	88	103	88	90	105	80	89	1370	6%
Referred to out-patient Clinic	94	101	91	88	82	99	100	109	112	125	93	124	1218	5%
Left department before being treated	44	23	24	16	30	43	25	28	30	45	18	45	371	2%
Other	13	18	22	20	20	16	9	23	20	19	23	25	228	1%
Referred to other health care professional	12	7	16	14	23	22	24	27	19	25	16	19	224	1%
Transferred to other health care provider	27	15	<20	22	<15	<20	12	14	<25	20	23	19	215	1%
Left department having refused treatment	<10	<10	***	9	10	5	5	8	8	15	8	8	97	0%
Died in department	***	***	0	0	***	***	0	0	***	0	0	0	6	0%
Total	2028	1876	1698	1682	1738	2122	1937	2026	2177	2381	1902	2324	23891	100%

¹ Please note that all numbers less than five have been suppressed (with ***) in line with patient confidentiality. If there is only one number less than five in a category then two numbers have been suppressed to prevent back calculations from totals.

² Due to rounding, percentages may not add up to 100%.

ASSAULTS

Table 5: ED assault attendances by incident location and month, October 2013 to September 2014³

Incident Location	Oct	Nov	Dec	Jan	Feb	Mar	Apr	May	Jun	Jul	Aug	Sep	Total	%
Other	31	15	24	16	17	23	18	24	27	26	19	23	263	61%
Public Place	13	10	17	14	10	9	***	<10	14	8	9	7	121	28%
Home	***	***	***	***	***	***	***	***	***	5	***	***	19	4%
Work	***	***	***	***	***	***	***	***	***	***	***	***	21	5%
Educational Establishment	***	***	***	***	***	5	***	***	***	***	***	***	<15	2%
Unknown	***	***	***	***	***	***	***	***	***	***	***	***	***	0%
Total	48	31	44	35	31	39	26	31	45	42	29	33	434	100%

Published January 2015

Trauma and Injury Intelligence Group

Centre for Public Health, Faculty of Education, Health and Community, Liverpool John Moores University,
2nd Floor, Henry Cotton Building, Liverpool L3 2ET

T: 0151 231 4498 | E: tiig@ljmu.ac.uk | W: www.tiig.info and www.cph.org.uk | Twitter: [www.twitter.com/tiig_cph](https://twitter.com/tiig_cph)

³ Please note that all numbers less than five have been suppressed (with ***) in line with patient confidentiality. If there is only one number less than five in a category then two numbers have been suppressed to prevent back calculations from totals.